

Madison Early Possession Walkout Rambler

4636 Fable Road North Ave., Hugo, MN



Located in the Storybook Neighborhood of Fable Hill

This Madison Early Possession Custom Home Offers:

- Main Level Living
- Gourmet Kitchen with Butler's Pantry
and Quartz Countertops
- Office with Built In Desk on Main-level
- Fireplace and Wet Bar on Lower-level
- Owner's Suite has a Private Bathroom,
walk-in Shower, Soaking Tub and a large
walk-in Close
- Lower Level with Walk up Bar and
Fireplace
- Screen Porch and Grill Deck

- 3 Bedrooms
- 3 Bathrooms
- 3 Car Finished Garage

\$1,025,000

Main Level 1,595 Sq. Ft.

Lower Level 1,353 Sq. Ft.

Total Finished 2,948 Sq. Ft.



MN LIC. #BC000001

PRATTHOMES.COM

Cindy Johnson

763-350-3752

cindy@pratthomes.com

Edina Realty

a Berkshire Hathaway affiliate

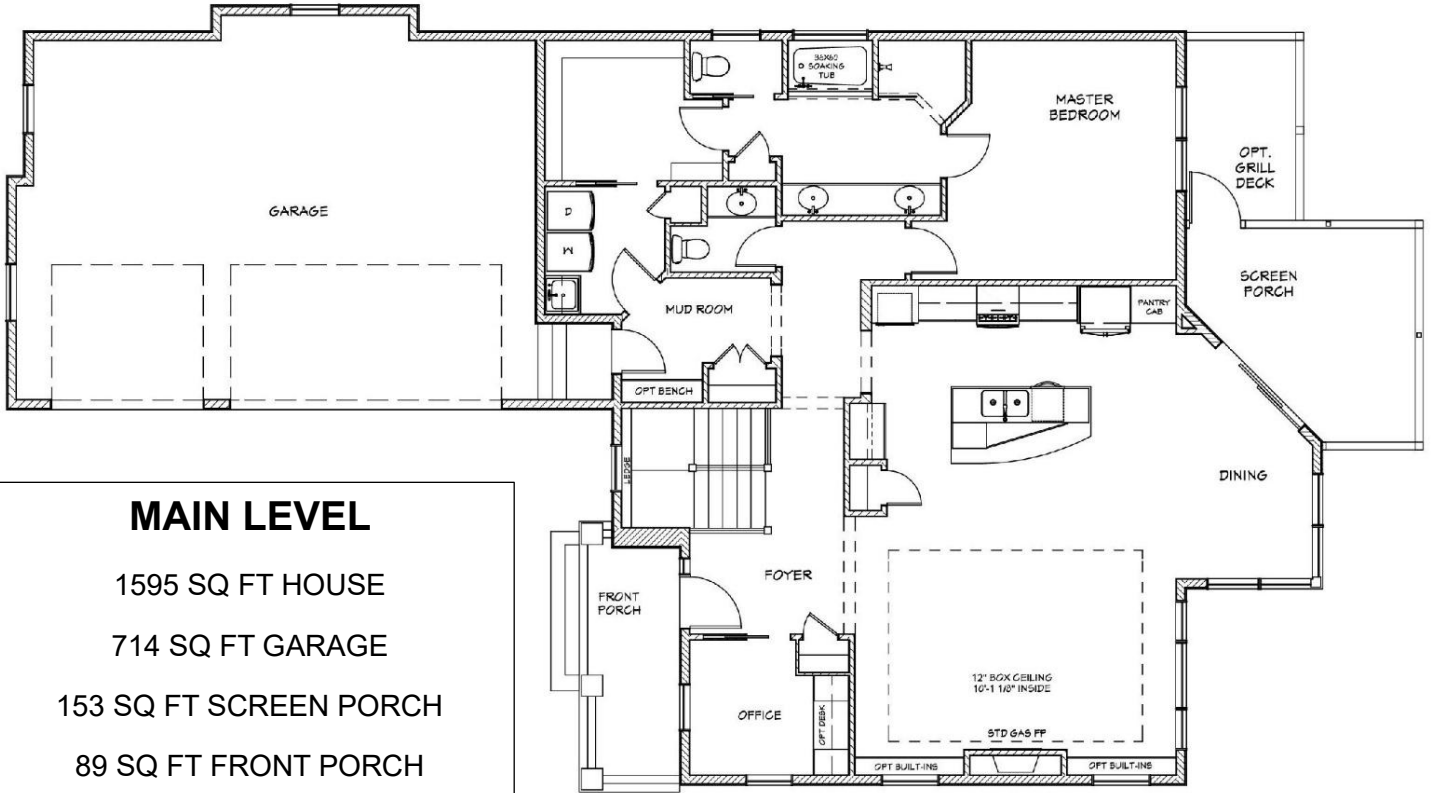


MADISON CUSTOM RAMBLER

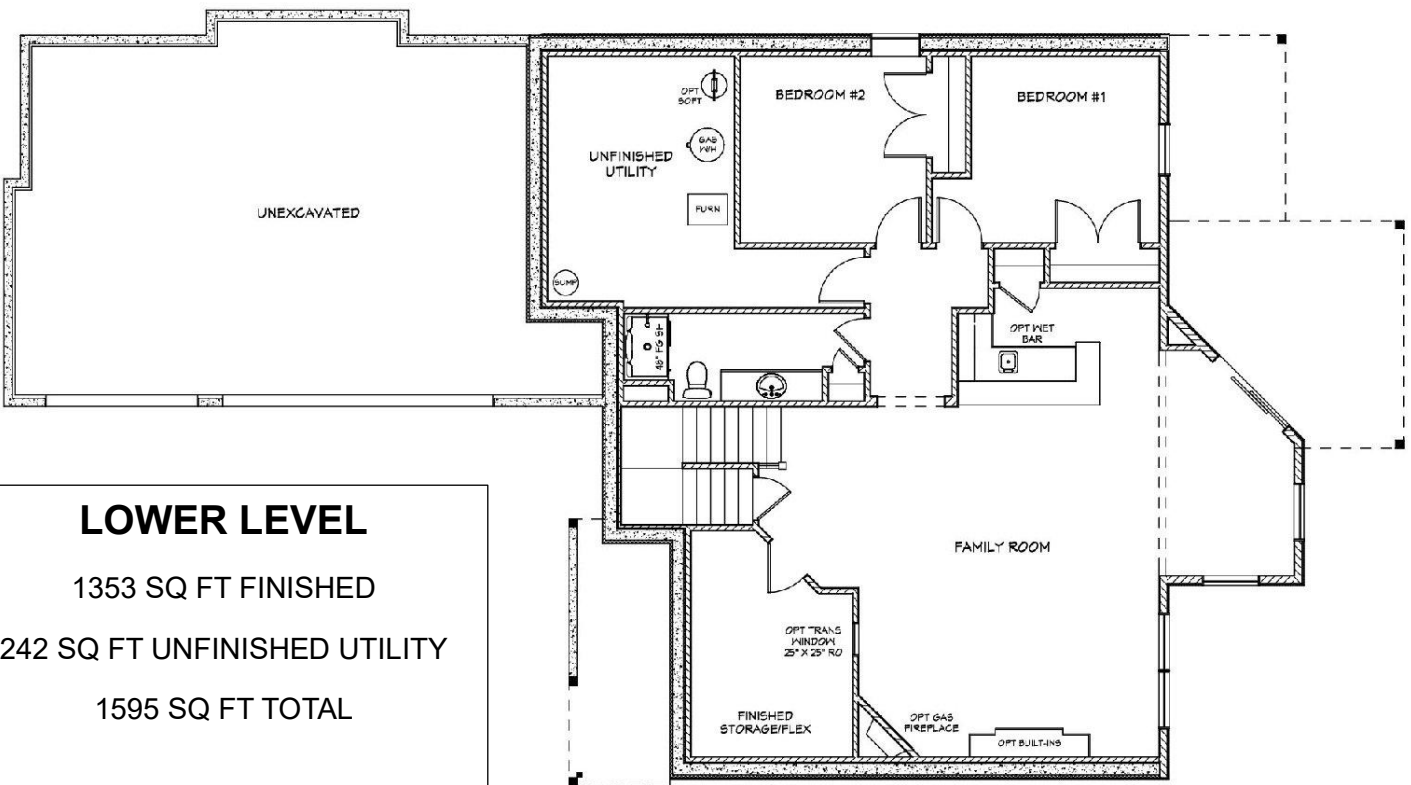
EARLY POSSESSION HOME

4636 Fable Road North, Hugo

2948 SQ FT TOTAL FINISHED



MAIN LEVEL
1595 SQ FT HOUSE
714 SQ FT GARAGE
153 SQ FT SCREEN PORCH
89 SQ FT FRONT PORCH



LOWER LEVEL
1353 SQ FT FINISHED
242 SQ FT UNFINISHED UTILITY
1595 SQ FT TOTAL

Plans subject to change without notice - contact Sales Representative for current information.